

# TL49J

## TRAILER MOUNTED BOOM LIFT



- Heavy-duty trailer mounted boom lift
- Superb working envelope with articulating/telescopic boom
- Easy to use live hydraulic controls
- Simple to maintain
- Range of power source options

 **snorkel**  
[www.snorkellifts.com](http://www.snorkellifts.com)

# TRAILER MOUNTED BOOM LIFT

# TL49J

## DIMENSIONS TL49J

Max. working height	16.7m
Max. platform height	14.7m
Max. horizontal reach	8.5m
Platform width (C)	1.14m
Platform depth	0.7m
Outrigger footprint (A x B)	4.8m x 4.7m
Towing width (F)	1.72m
Towing length (E)	7.1m
Stowed height (D)	2.16m

## PERFORMANCE

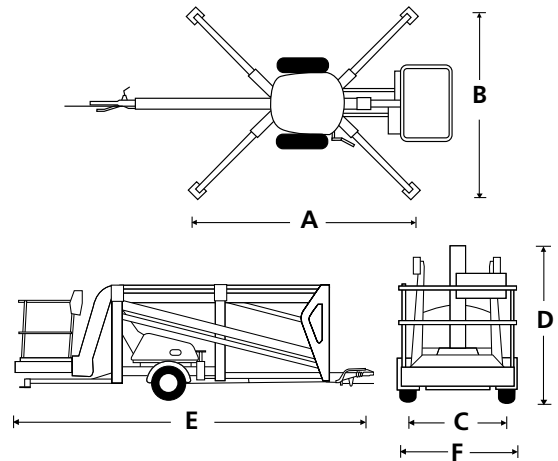
Platform capacity (SWL)	200kg
Max. wind speed	12.5m/s
Jib length	1.3m
Jib arc	130°
Platform rotation	90°
Superstructure rotation (non-continuous)	680°
Tires	205/75R16
Controls	hydraulic proportional

## POWER

Power source	24V DC battery
Power options	Gasoline, bi-energy (combustion & battery), AC electric

## WEIGHT

Weight (battery model)	2,389kg
------------------------	---------



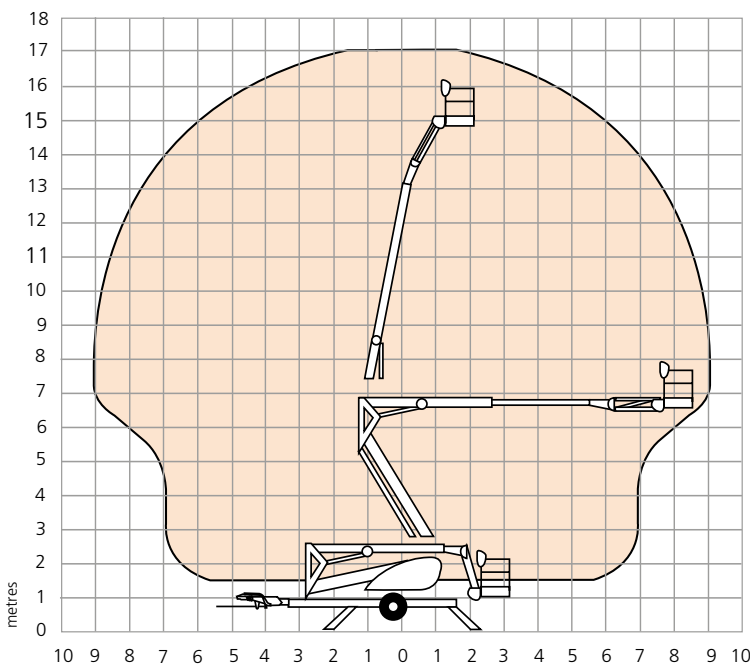
## STANDARD FEATURES

- Hydraulic outriggers
- In-line boom design for maximum rigidity
- Hand pump emergency lowering from platform
- Lock valves on all hydraulic cylinders
- Proportional live hydraulic controls
- Power line to platform
- Integral road lighting board
- 2 year parts & labor, 5 year structural warranty
- ANSI compliant

## OPTIONS

- Special paint colors
- Friction drive assist package
- Work lights in platform
- Flashing amber light
- Airline to platform
- Nylon spreader pads (set of 4)
- Environmental hydraulic oil
- CSA compliant

## WORKING ENVELOPE



**snorkel** [www.snorkellifts.com](http://www.snorkellifts.com)

P.O. Box 1160  
 St. Joseph, MO 64502-1160, USA  
 Tel: 1 (785) 989-3000  
 Toll-free: 1 (800) 255-0317  
 Fax: 1 (785) 989-3070  
 Email: sales.usa@snorkellifts.com