

# AB80J/AB85J

## ARTICULATED BOOM LIFTS



- The ultimate diesel articulated boom
- Excellent aerial manoeuvrability with "up & over" capabilities
- Powerful 4 wheel drive and 4 wheel steer
- Smooth, precise, easy to use controls
- Simple to maintain and service

 **snorkel**  
[www.snorkellifts.com](http://www.snorkellifts.com)

# ARTICULATED BOOM LIFTS

# AB80J/AB85J

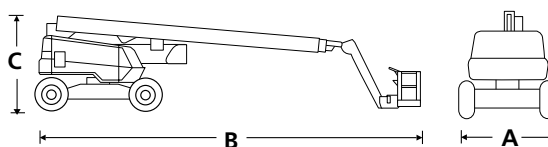
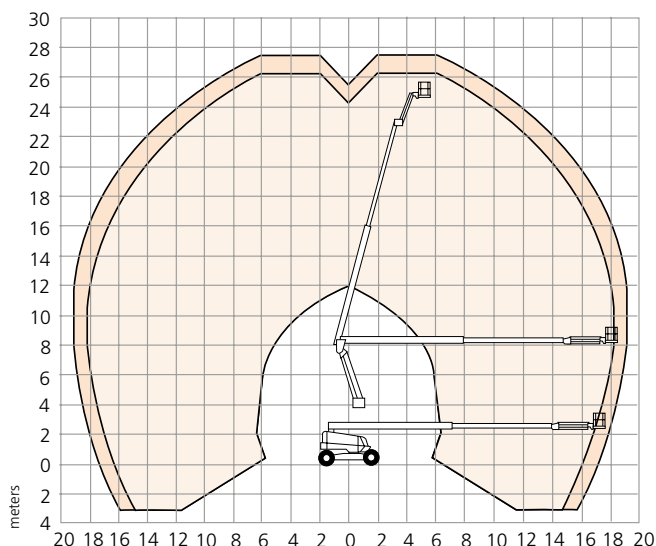
DIMENSIONS	AB80J	A85J
Max. working height	26.3m	27.7m
Max. platform height	24.3m	25.7m
Max. horizontal reach	18.1m	18.8m
Clearance height at max. outreach	8.5m	8.5m
Platform size	0.91m x 2.44m	0.91m x 2.44m
Overall width (A)	2.6m	2.6m
Overall length (B)	9.8m	12.5m
Stowed height (C)	3.0m	3.0m
Ground clearance	330mm	330mm

PERFORMANCE		
Platform capacity (SWL)	227kg	227kg
Max. drive height	24.3m	25.7m
Max. wind speed	12.5m/s	12.5m/s
Max. drive speed (stowed)	4.8km/h	4.8km/h
Max. drive speed (elevated)	1.0km/h	1.0km/h
Jib length	1.5m	2.0m
Jib arc	140° (+70°/-70°)	135° (+70°/-65°)
Jib rotation	n/a	140° side to side
Platform rotation	150°	150°
Superstructure rotation (continuous)	360°	360°
Tailswing	0.89m	0.89m
Raise/Lower time	240/240 sec	240/240 seconds
Gradeability	30%	30%
Inside turning radius	2.4m	2.4m
Outside turning radius	4.7m	4.7m
Tires	15 x 625 foam filled lug	
Controls	proportional joystick	
Drive system	4 wheel drive	

POWER	
Power source	Kubota V2403 65 hp diesel - Tier 4 Final

WEIGHT		
Weight	16,692kg	17,500kg

## WORKING ENVELOPE



## STANDARD FEATURES

- Snorkel Guard™ secondary guarding system
- 360° continuous turntable rotation
- Hydraulic platform rotation
- 4 wheel drive, steer & crab steer
- Proportional drive, lift & swing, extend & rotate
- Foam filled lug tires
- Power line to platform
- Dual lanyard attachment points
- Drive motion alarm
- Flashing amber light
- Horn
- 5° tilt alarm
- 2 year parts & labor, 5 year structural warranty
- ANSI compliant

## OPTIONS

- Special paint colors
- AC generator 110V/240V 2kW
- Non-marking tyres
- Airline to platform
- Aircraft package
- Deluxe aircraft package
- Cold weather package
- Extreme cold weather package
- Extreme environment package
- Light package
- Tow kit
- Glazier package
- 12kW generator package
- 12kW generator/welder package
- Environmental hydraulic oil
- CSA compliant

**snorkel** [www.snorkellifts.com](http://www.snorkellifts.com)

P.O. Box 1160  
 St. Joseph, MO 64502-1160, USA  
 Tel: 1 (785) 989-3000  
 Toll-free: 1 (800) 255-0317  
 Fax: 1 (785) 989-3070  
 Email: sales.usa@snorkellifts.com